

MICHAEL D. NEAL & ASSOCIATES, INC.

Forestry Consultants to Private Landowners Since 1974

754 NC 11 North

Ahoskie, North Carolina 27910

PHONE 252-398-1460

FAX 252-398-1480

MICHAEL D. NEAL, PRESIDENT

Michael D. Neal

Direct Line 252-398-1475

mike@mdneal.com

John M. Crump

Direct Line 252-398-1470

Cell Phone 252-209-7005

johncl@mdneal.com

Land Sale

FIATP SSF Timber LLC

Block 08-809 -282+/- Acres

Northampton County, NC

Property Owner of Record: FIATP SSF Timber LLC

Property Identification: Northampton County PIN: 4993-04-5449
4983-90-0835
4993-21-8073

Contact of Sale: Michael D. Neal Office: 252-398-1475
Cell: 252-287-7205
John M. Crump Office: 252-398-1470
Cell: 252-209-7005

Boundaries: Painted

Type of Sale: Private Treaty

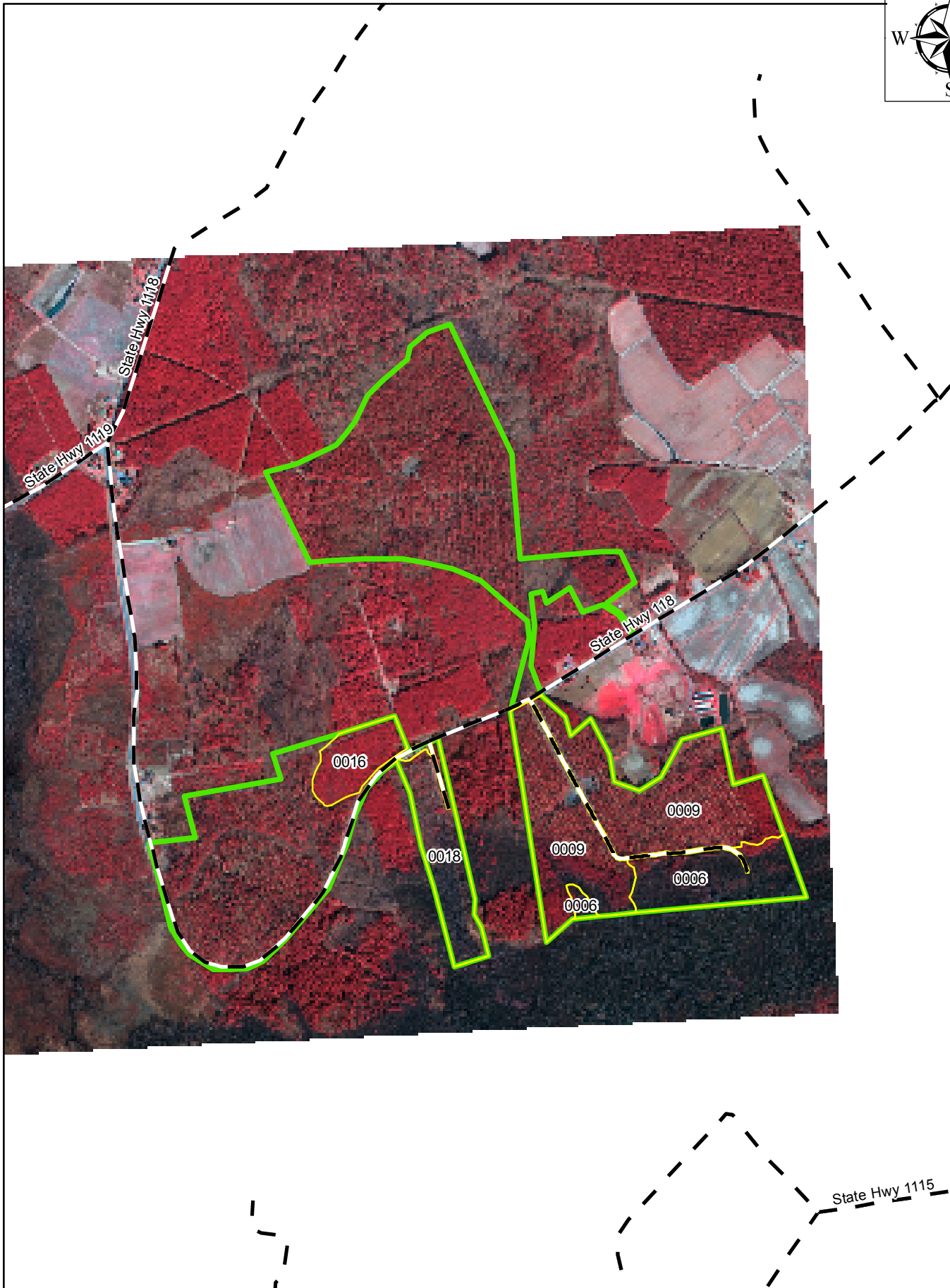
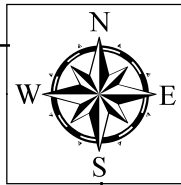
Tract Information: Woodland
Merchantable
Hardwood 39 acres
Merchantable
Pine Plantation 210 acres
Premerchantable
Pine Plantation 11 acres
Merchantable PH 13 acres
Other 9 acres
282 acres

Estimated Timber Volumes:

Pine Pulpwood	2,776 tons
Pine Chip-n-saw	7,982 tons
Pine Sawtimber	3,021 tons
Hardwood Pulp	2,638 tons
Hardwood Saw	769 tons

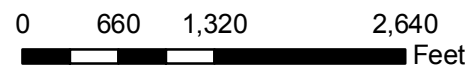
Asking Price: \$643,100.00

2010 Proposed Land Sales



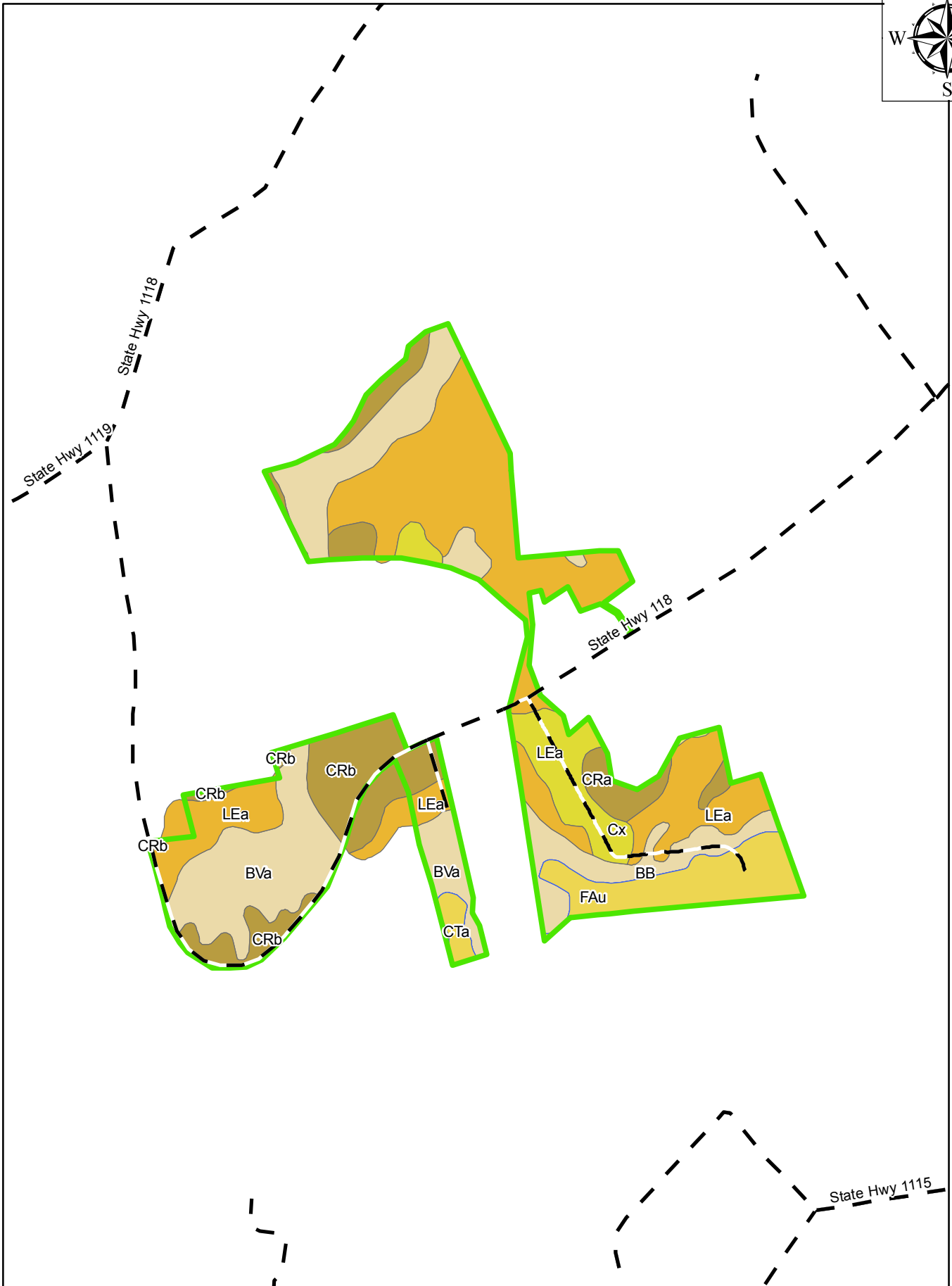
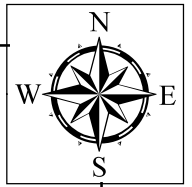
TRACT: BLOCK 08-809

MU: Potecassi Creek



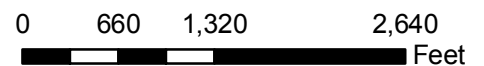
COUNTY, ST: NORTHAMPTON, NC FUND: FIA TP SSF

2010 Proposed Land Sales



TRACT: BLOCK 08-809

MU: Potecassi Creek



COUNTY, ST: NORTHAMPTON, NC FUND: FIA TP SSF

Map 1 of 1

April, 2010

MICHAEL D. NEAL & ASSOCIATES, INC.

Forestry Consultants to Private Landowners Since 1974

754 NC 11 North

Ahoskie, North Carolina 27910

PHONE 252-398-1460

FAX 252-398-1480

MICHAEL D. NEAL, PRESIDENT

Michael D. Neal

Direct Line 252-398-1475

mike@mdneal.com

John M. Crump

Direct Line 252-398-1470

Cell Phone 252-209-7005

johncl@mdneal.com

Land Sale

FIATP SSF Timber LLC

Block 08-813 -402+/- Acres

Northampton County, NC

Property Owner of Record: FIATP SSF Timber LLC

Property Identification: Northampton County PIN: 4976-22-7101
4976-62-8465

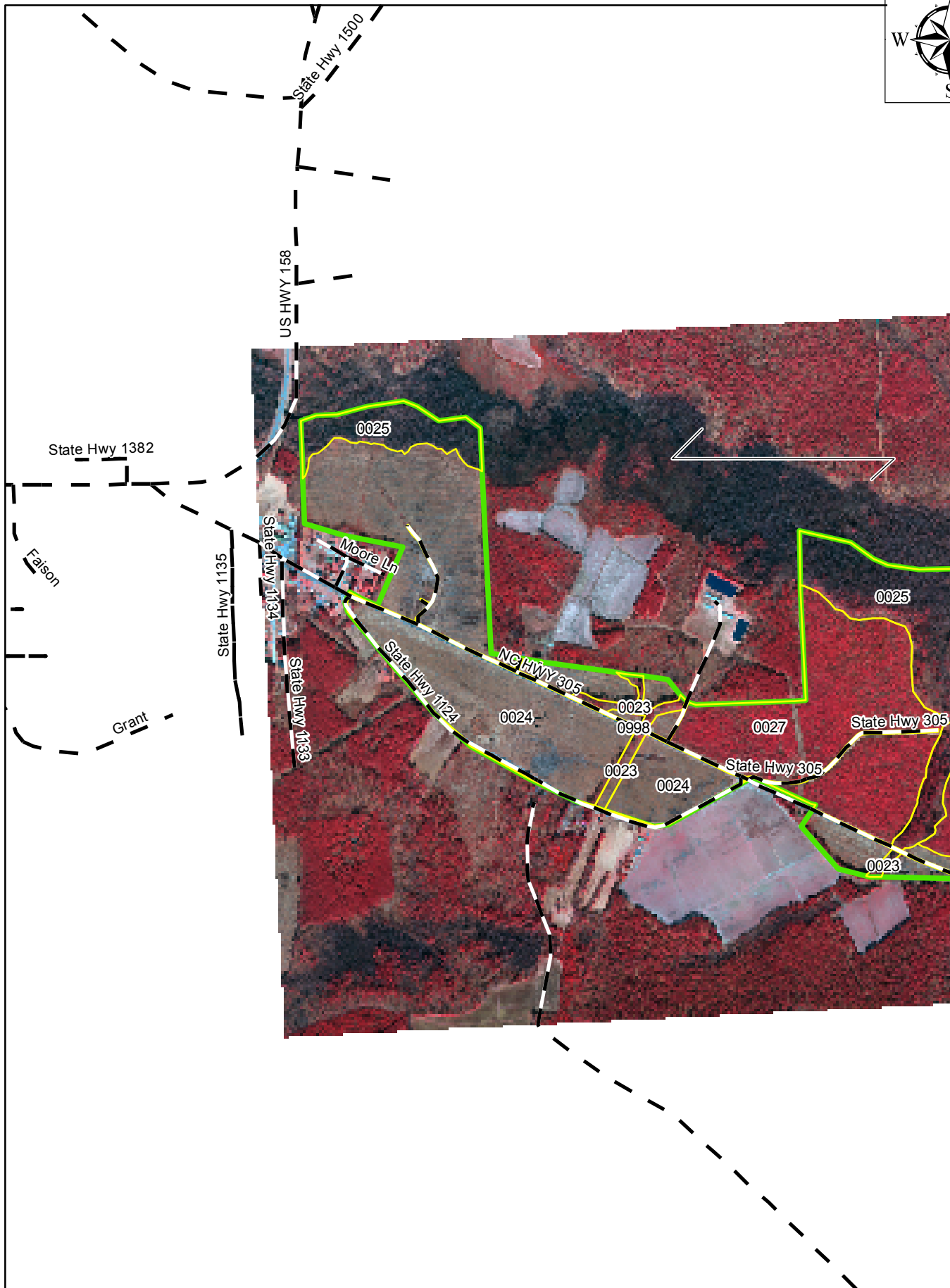
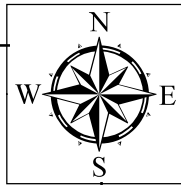
Contact of Sale: Michael D. Neal Office: 252-398-1475
Cell: 252-287-7205
John M. Crump Office: 252-398-1470
Cell: 252-209-7005

Boundaries: Painted
Type of Sale: Private Treaty
Tract Information: Woodland
Merchantable
Hardwood 96 acres
Premerchantable
Pine Plantation 290 acres
Merchantable PH 6 acres
Other 10 acres
402 acres

Estimated Timber Volumes:
Pine Pulpwood 153 tons
Pine Chip-n-saw 423 tons
Pine Sawtimber 1,614 tons
Hardwood Pulp 5,141 tons
Hardwood Saw 3,243 tons

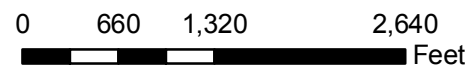
Asking Price: \$836,100.00

2010 Proposed Land Sales



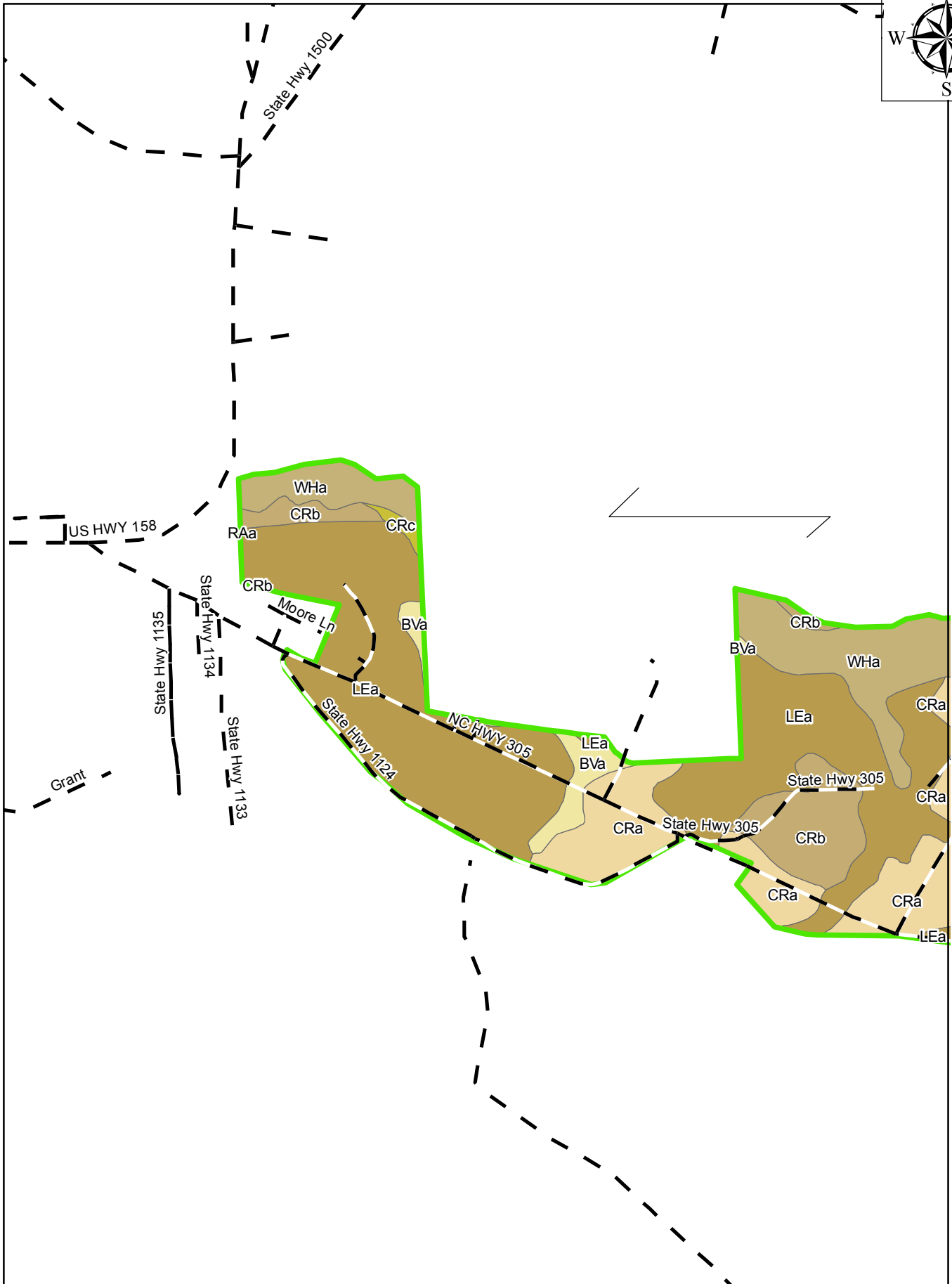
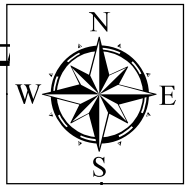
TRACT: BLOCK 08-813

MU: Potecassi Creek



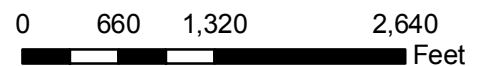
COUNTY, ST: NORTHAMPTON, NC FUND: FIA TP SSF

2010 Proposed Land Sales



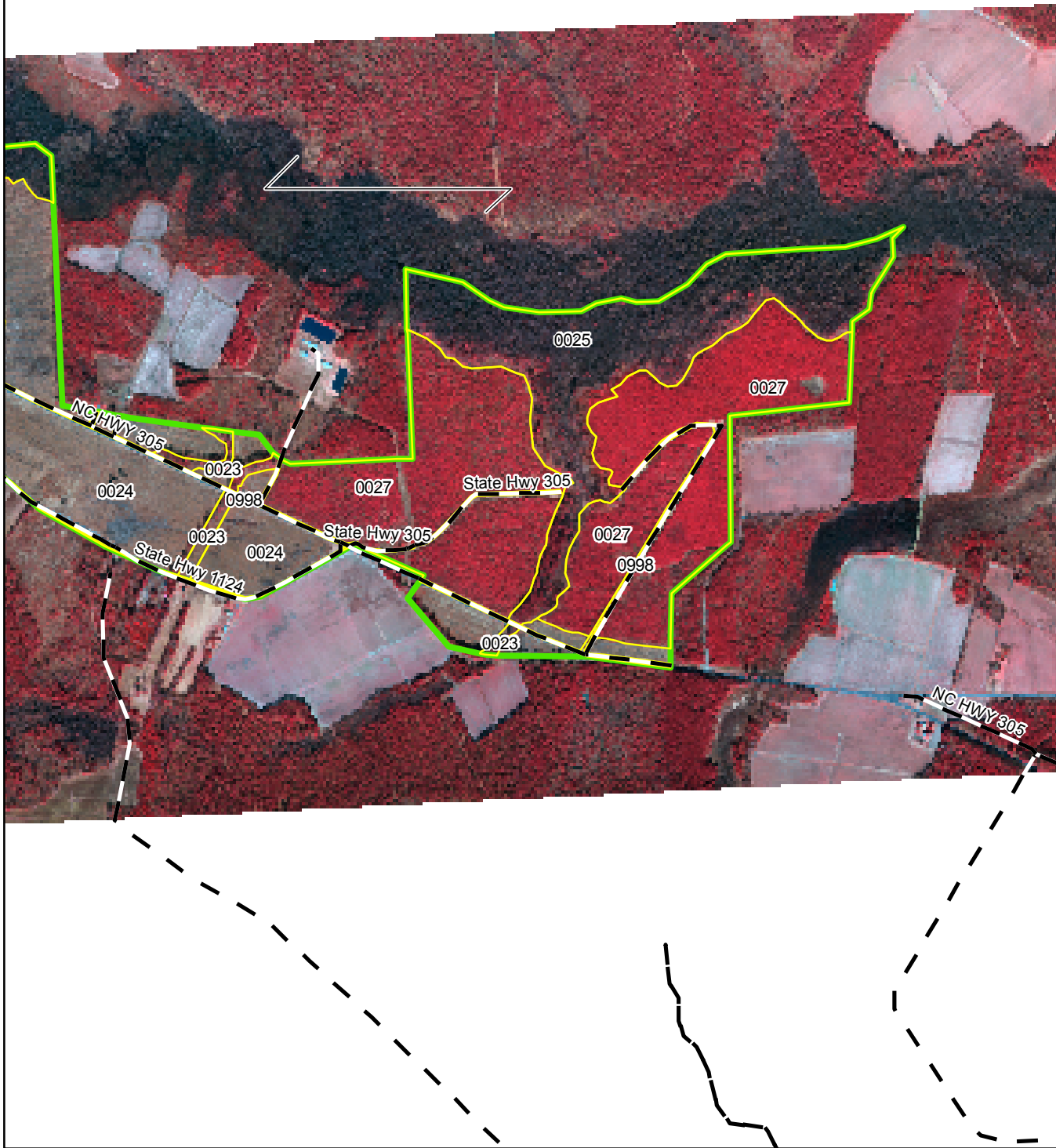
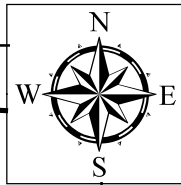
TRACT: BLOCK 08-813

MU: Potecassi Creek



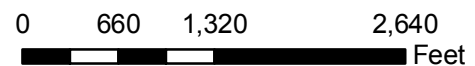
COUNTY, ST: NORTHAMPTON, NC FUND: FIA TP SSF

2010 Proposed Land Sales



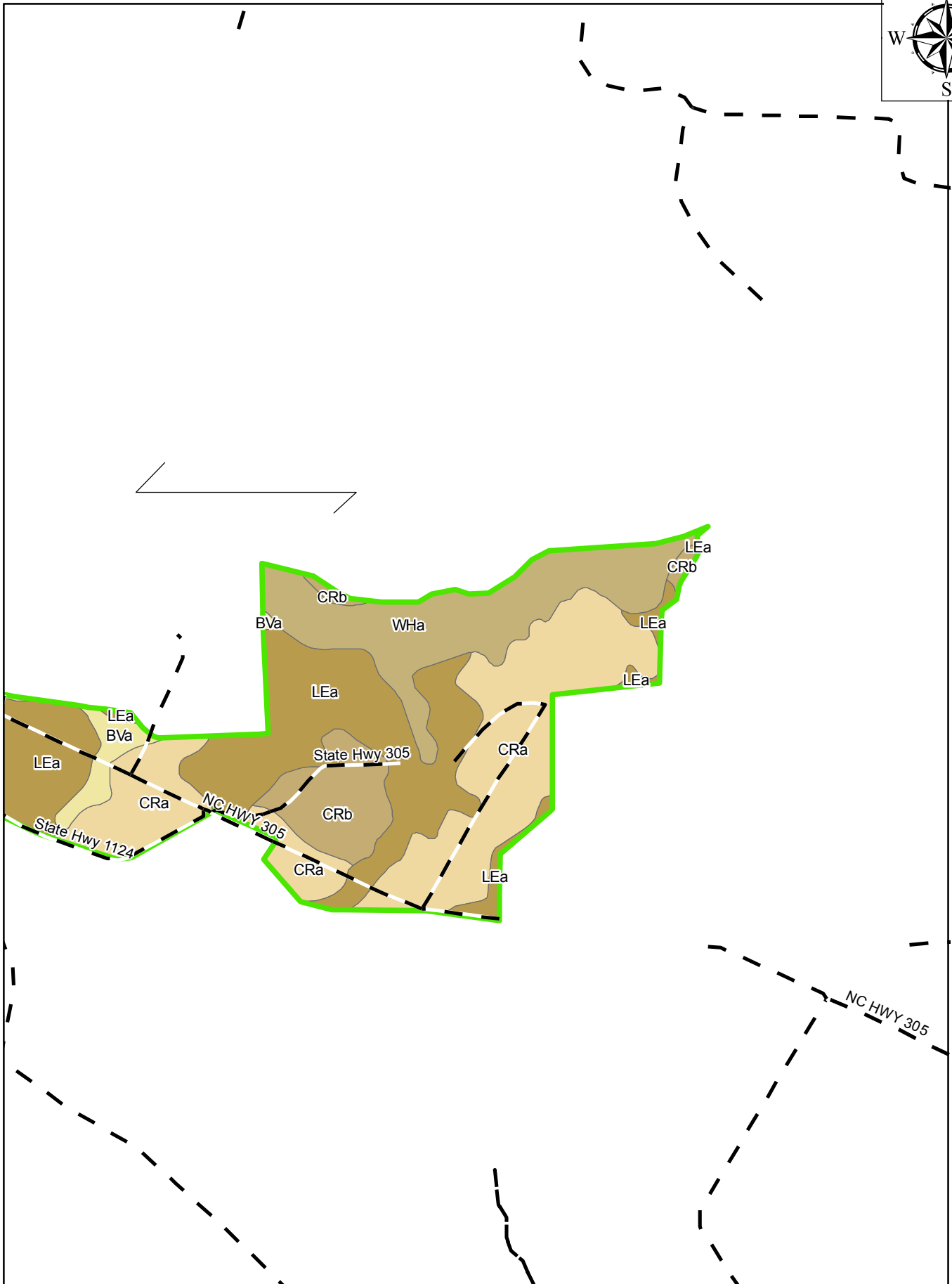
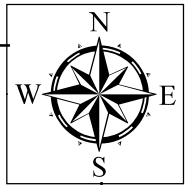
TRACT: BLOCK 08-813

MU: Potecassi Creek



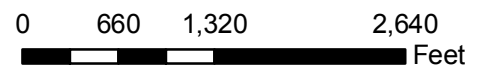
COUNTY, ST: NORTHAMPTON, NC FUND: FIA TP SSF

2010 Proposed Land Sales



TRACT: BLOCK 08-813

MU: Potecassi Creek



COUNTY, ST: NORTHAMPTON, NC FUND: FIA TP SSF

MICHAEL D. NEAL & ASSOCIATES, INC.

Forestry Consultants to Private Landowners Since 1974

754 NC 11 North

Ahoskie, North Carolina 27910

PHONE 252-398-1460

FAX 252-398-1480

MICHAEL D. NEAL, PRESIDENT

Michael D. Neal

Direct Line 252-398-1475

mike@mdneal.com

John M. Crump

Direct Line 252-398-1470

Cell Phone 252-209-7005

johncl@mdneal.com

Land Sale

FIATP SSF Timber LLC

Woodley Crew -139+/- Acres

Northampton County, NC

Property Owner of Record: FIATP SSF Timber LLC

Property Identification: Northampton County PIN: 4983-51-1606

Contact of Sale:

Michael D. Neal	Office: 252-398-1475
	Cell: 252-287-7205
John M. Crump	Office: 252-398-1470
	Cell: 252-209-7005

Boundaries: Painted

Type of Sale: Private Treaty

Tract Information:

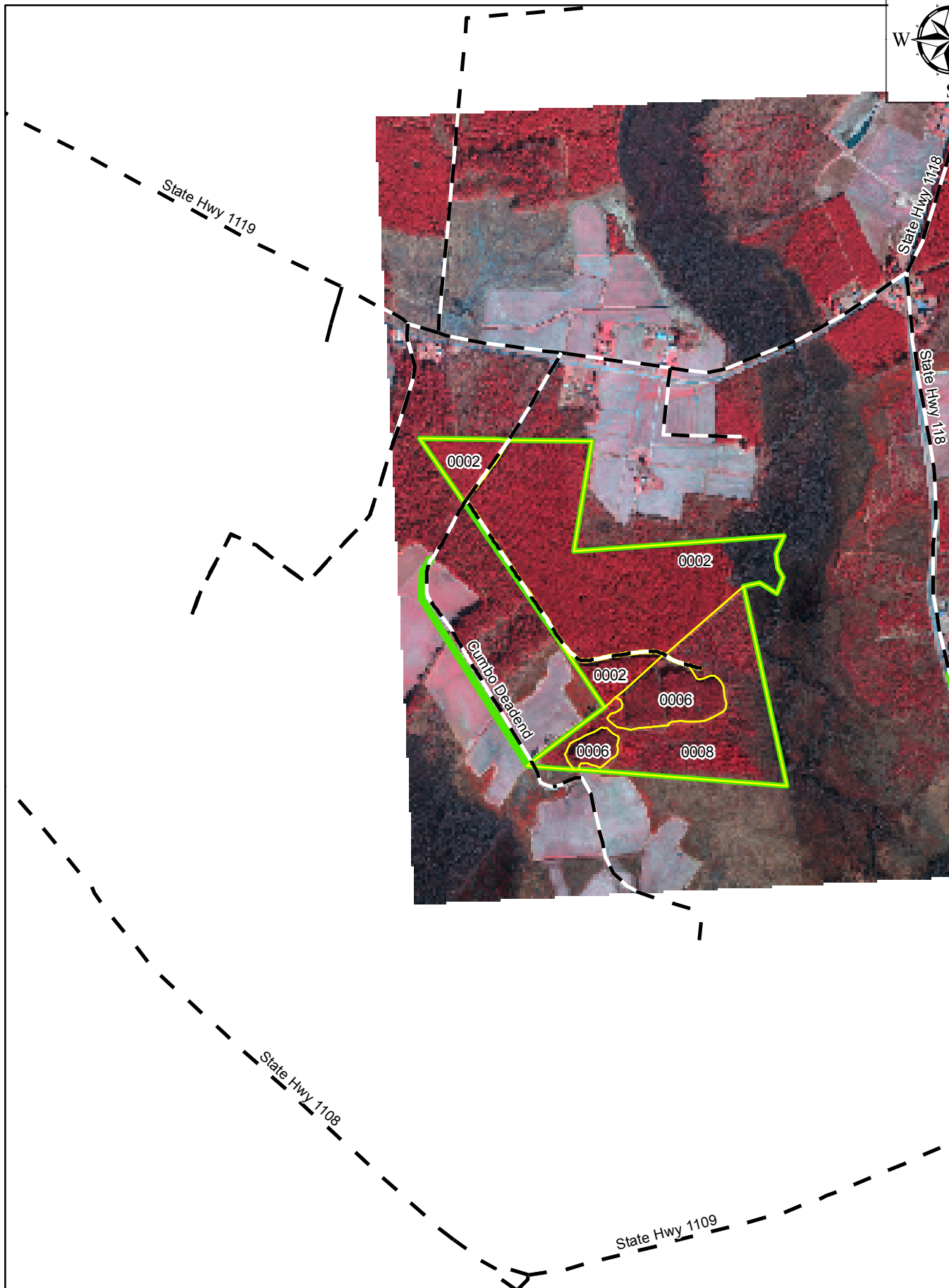
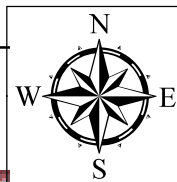
Woodland	
Merchantable	
Pine Plantation	81 acres
Premerchantable	
Pine Plantation	54 acres
Other	<u>4 acres</u>
	139 acres

Estimated Timber Volumes:

Pine Pulpwood	4,382 tons
Pine Chip-n-saw	2,585 tons

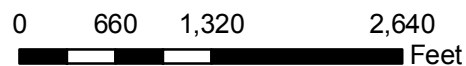
Asking Price: \$330,200.00

2010 Proposed Land Sales



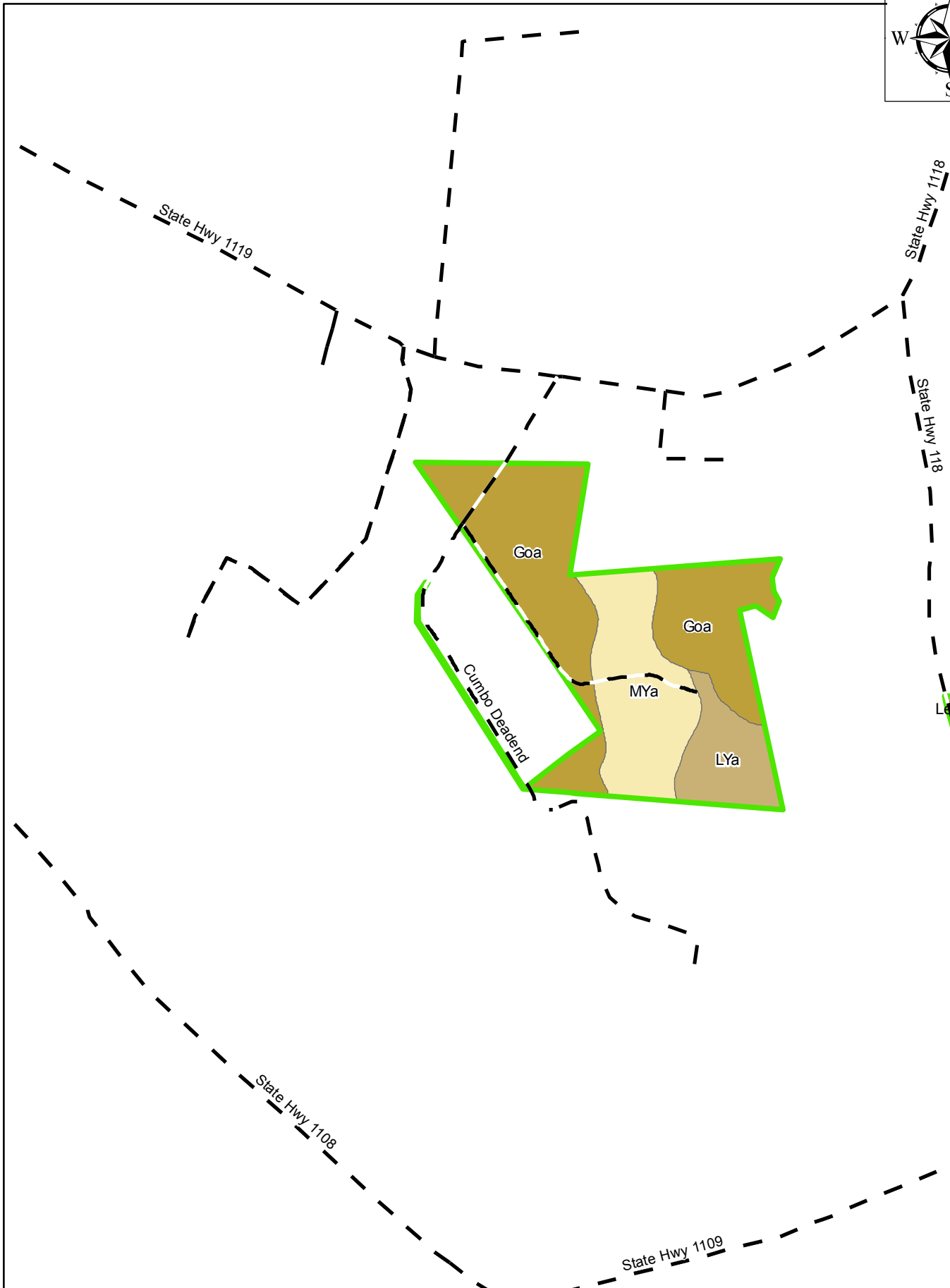
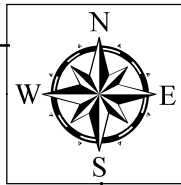
TRACT: WOODLEY CREW #2

MU: Potecassi Creek



COUNTY, ST: NORTHAMPTON, NC FUND: FIA TP SSF

2010 Proposed Land Sales



TRACT: WOODLEY CREW #2

MU: Potecassi Creek

0 660 1,320 2,640 Feet

COUNTY, ST: NORTHAMPTON, NC FUND: FIA TP SSF

Map 1 of 1

April, 2010

MICHAEL D. NEAL & ASSOCIATES, INC.

Forestry Consultants to Private Landowners Since 1974

754 NC 11 North

Ahoskie, North Carolina 27910

PHONE 252-398-1460

FAX 252-398-1480

MICHAEL D. NEAL, PRESIDENT

Michael D. Neal

Direct Line 252-398-1475

mike@mdneal.com

John M. Crump

Direct Line 252-398-1470

Cell Phone 252-209-7005

johncl@mdneal.com

Land Sale

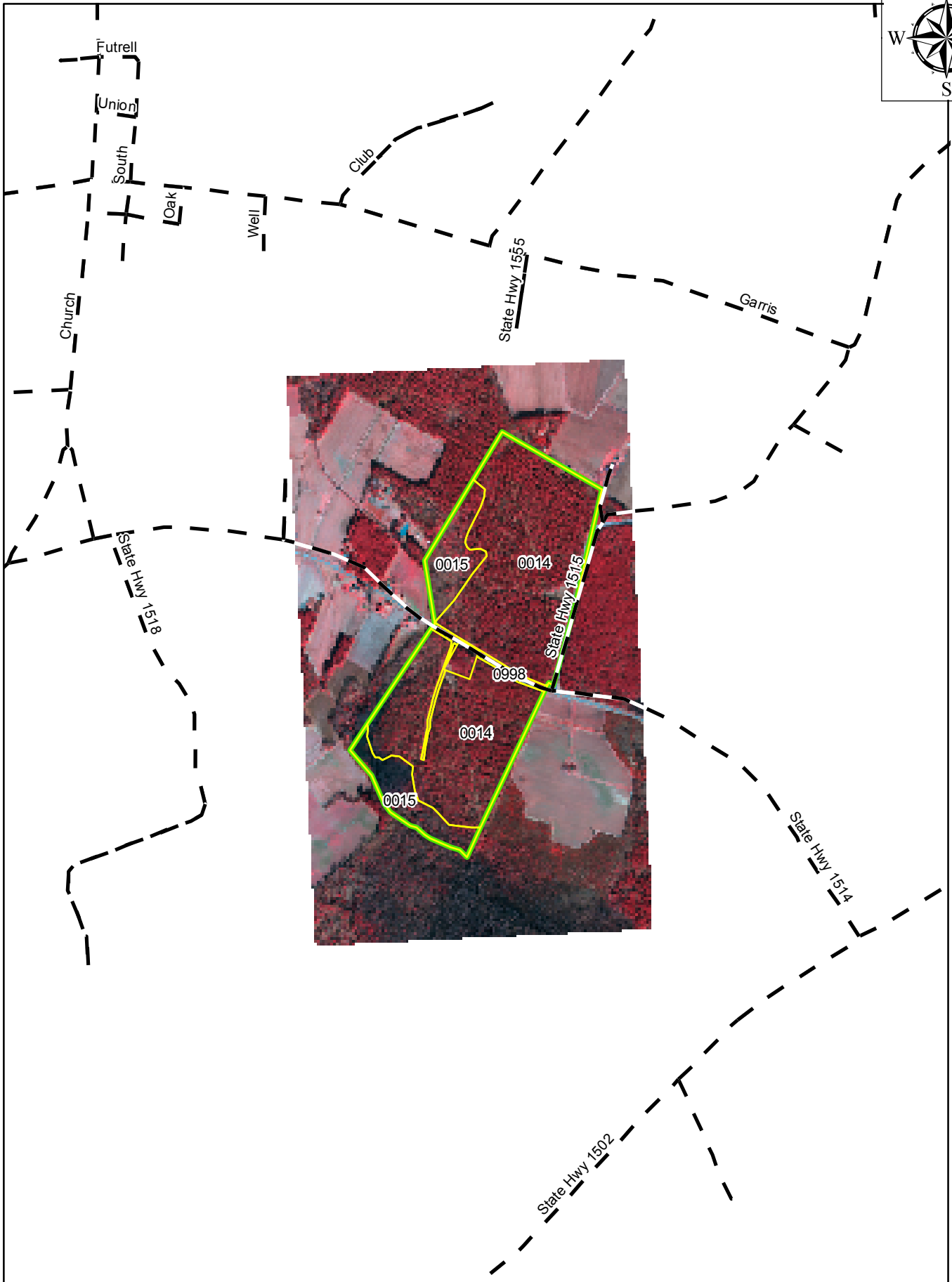
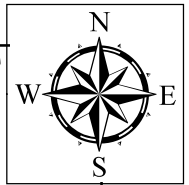
FIATP SSF Timber LLC

Hills Sheely 801 - 116+/- Acres

Northampton County, NC

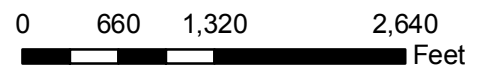
Property Owner of Record:	FIATP SSF Timber LLC	
Property Identification:	Northampton County PIN:	5904-36-0954
Contact of Sale:	Michael D. Neal	Office: 252-398-1475 Cell: 252-287-7205
	John M. Crump	Office: 252-398-1470 Cell: 252-209-7005
Boundaries:	Painted	
Type of Sale:	Private Treaty	
Tract Information:	Woodland Merchantable Pine/Hardwood	95 acres
	Merchantable Hardwood	18 acres
	Other	<u>3 acres</u>
		116 acres
Estimated Timber Volumes:	Pine Pulpwood	1,074 tons
	Pine Chip-n-saw	2,679 tons
	Pine Sawtimber	1,872 tons
	Hardwood Pulp	1,815 tons
	Hardwood Saw	323 tons
Asking Price:	\$275,000.00	

2010 Proposed Land Sales



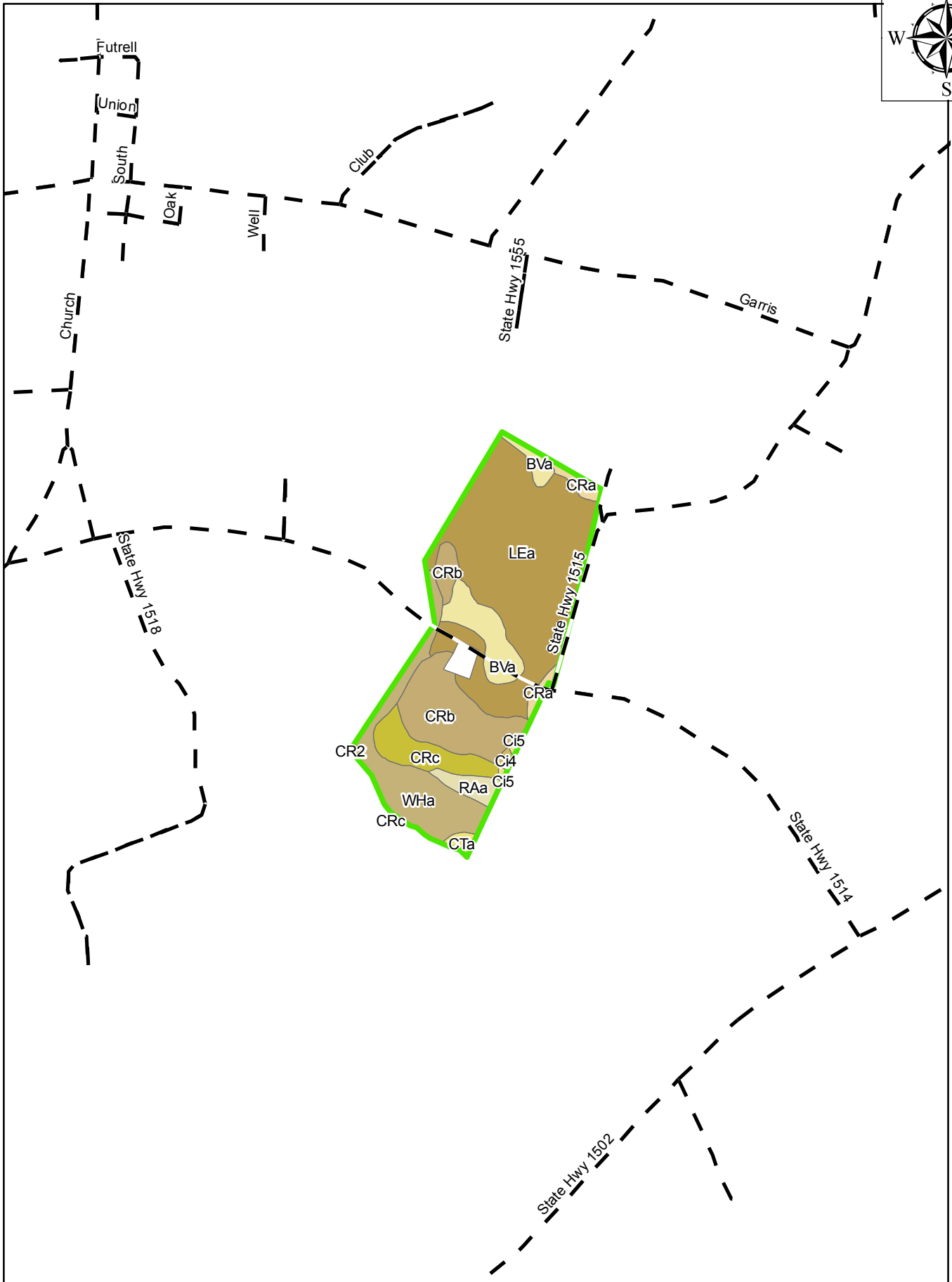
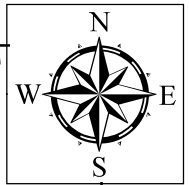
TRACT: HILLS SHEELY

MU: Potecassi Creek



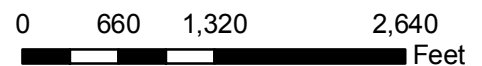
COUNTY, ST: NORTHAMPTON, NC FUND: FIA TP SSF

2010 Proposed Land Sales



TRACT: HILLS SHEELY

MU: Potecassi Creek



COUNTY, ST: NORTHAMPTON, NC FUND: FIA TP SSF